

#### Description

The 501A rotary drum pump is suitable for the transfer of oil, diesel and petrol from 60 and 205 litre drums and bulk tanks. The Gladiator 501A rotary drum pumps vanes make it also suitable for the transfer of diesel fuel, unleaded and leaded petrol. The Gladiator 501A comes complete with 2.2 metres of anti static fuel hose, spout, spout holster and 2" BSP bung adaptor & delivers approximately 18 litres per minute or 0.26 litres per rotation when pumping diesel fuel.

#### Specifications

Uses	Diesel, petrols, kerosene, lube oil and machine oil
Discharge Quantity	Approximately 70 turns / 18 litres per minute
Materials	Body hardened aluminum alloy; Handle - aluminum die cast; Seal - Buna N; Hose-anti static fuel hose
Weight/length	3.6 kgs/1300mm (4.3ft)
Size	Suction Tube: 31.8mm (1¼") OD Delivery Hose: 19.05mm (¾") ID x 2.2 metres

#### Assembly Instructions

Mount handle assembly (501A-9 & 501A-10) to the pump body (501A-1) with the aid of bolt (501A-18). Connect the outlet tube (501A-12) & the bung (501A-15) and then screw suction tube (501A-16) together with adaptor (501A-25) into the inlet of pump body.

When assembling pump & tubes, please ensure that all threads are completely airtight (use thread tape) otherwise the pump will not prime. Test prime by putting your hand over the bottom of the pump body inlet hole, turn handle in a clockwise direction. If you feel a strong suction on the palm of your hand the pump is operating correctly and is now ready to mount into the drum. If not, add a few drops of oil through the inlet hole and turn handle to lubricate internals.

If pumping fuels and the pump does not prime, lubricate pump body with some oil via the pump inlet

This may be performed as required if using petrol which can dry out the vanes inside reducing suction & priming.

#### Operating Instructions

##### When using as a siphon pump

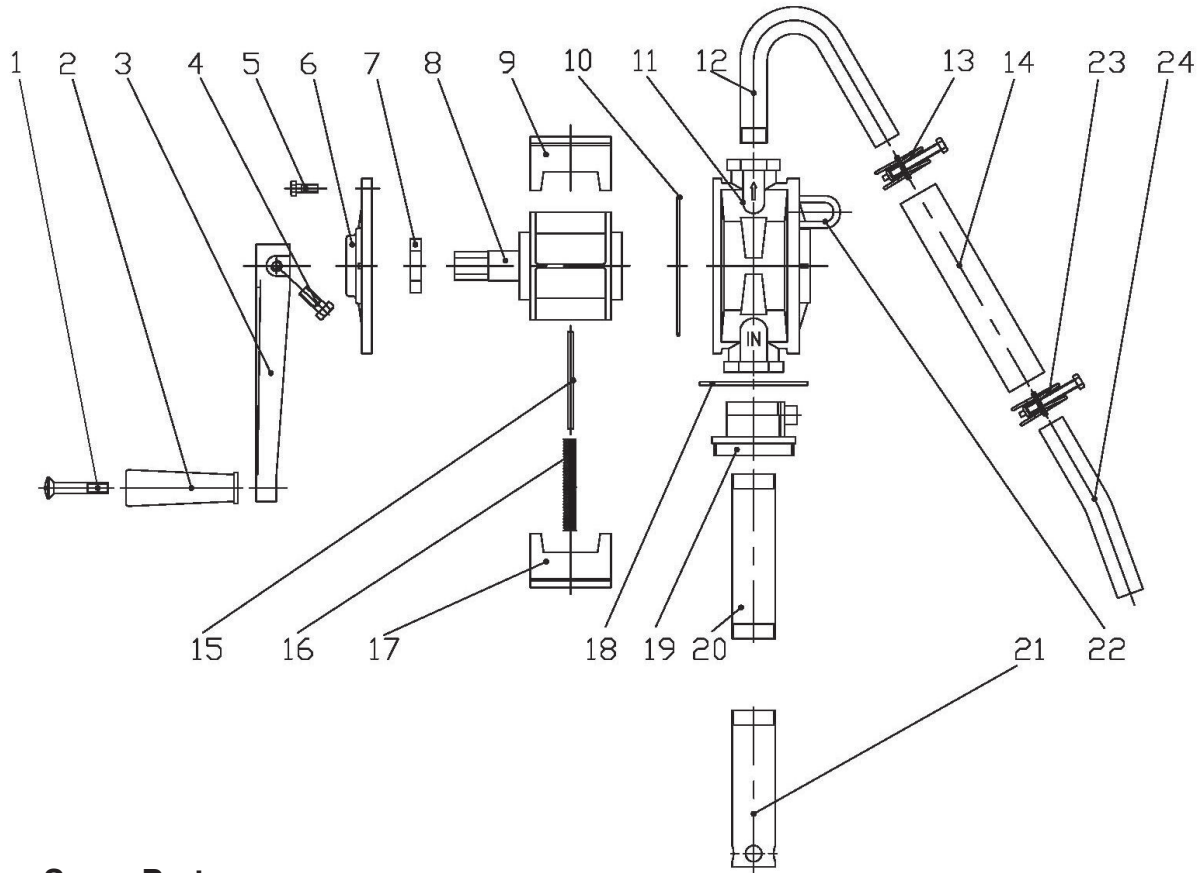
- 1 Turn the handle 5 or 6 times. When the liquid begins to flow from the outlet, place handle at a horizontal direction.
- 2 If the liquid stops being transferred flowing, move the handle slightly.
- 3 After use, fix the handle to the indicated point. Then the liquid inside the pump can now flow back into the drum.
- 4 Siphoning will not work when pumping liquid of a high viscosity. The pump will not siphon successfully unless all hose and pump joints are fully tightened up and all connection points are completely airtight.

#### Caution

Do not use this pump for transferring solvents, strong alkalis or acids as the pumps seals and gaskets are incompatible with aggressive solutions. Contact us for various chemical pump models available.



# Parts And Drawing Breakdown For The 501A



## Ordering Spare Parts

### Parts List – Part No. 501A

ITEM	PART NO	DESCRIPTION	QTY
1	501A-1	Grip Shaft	1
2	501A-2	Handle	1
3	501A-3	Handle Shaft	1
4	501A-4	Locking Bolt	1
5	501A-5	Locking Bolt	6
6	501A-6	Pump Cover	1
7	501A-7	Oil Seal	1
8	501A-8	Rotor	1
9	501A-9	Vane	1
10	501A-10	O-Ring	1
11	501A-11	Pump Body	1
12	501A-12	Outlet Spout	1
13	501A-13	Hose Clamp	1
14	501A-14	Anti static delivery Hose	1
15	501A-15	Vane Pin	1
16	501A-16	Vane Spring	1
17	501A-17	Vane	1
18	501A-18	Rubber Shroud	1
19	501A-19	Bung Adaptor	1
20	501A-20	Upper Suction Tube	1
21	501A-21	Lower Suction Tube	1
22	501A-22	Spout Holster	1
23	501A-23	Hose Clamp	1
24	501A-24	Delivery Spout	1

NSW  
TEL: (02) 9939 0711  
FAX: (02) 9939 0411

QLD/PNG  
TEL: (07) 3889 8480  
FAX: (07) 3889 8490

VIC/TAS  
TEL: (03) 8787 8288  
FAX: (03) 8787 8266

WA  
TEL: (08) 9209 3066  
FAX: (08) 9209 3933

SA/NT  
TEL: (08) 8241 7111  
FAX: (08) 8241 7011

NZ  
TEL: (09) 447 1007  
FAX: (09) 447 1008