

Single Feed Electro Oilers

SINGLE FEED ELECTRO OILERS deliver a pre-adjusted rate of liquid, by gravity from a reservoir, through a normally closed solenoid valve to an adjustable needle valve, which has a friction lock to retain its setting.

These units are simple, yet efficient. The drop feeding of the liquid can easily be observed through a lower sight chamber. Flow is controlled by wiring the normally closed solenoid valve across the line of the drive motor, providing automatic operation. The solenoid can be operated by a separate switch or timer for intermittent use.

Durable, shatterproof acrylic reservoirs are for temperatures below 160° F. Crystal clear pyrex or polycarbonate reservoirs are available for temperatures below 225° F. A self-closing filler cap is provided on top of the reservoir.

SPECIFICATIONS:

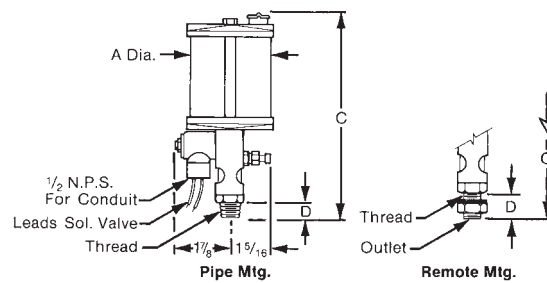
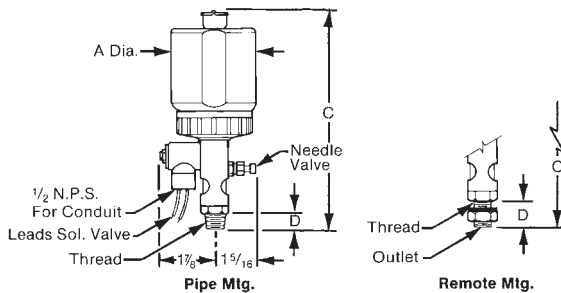
- Pressure Atmospheric Pressure
- Temperature Gravity Feed Only
- Metering Reservoir and Sight Vented
- Reservoir 160° F. Max. Acrylic
- Seals 225° F. Max. Pyrex or Polycarbonate
- Covers Adjustable Needle Valve and Solenoid Shutoff
- Body Acrylic, Polycarbonate or Pyrex
- Shank Buna-N
- Cover Glass
- Body Aluminum Alloy or Polypropylene
- Shank Aluminum Alloy
- Cover Steel, Plated



Style DE



Style DE



When Ordering Specify:

- Model Number
- Voltage and Frequency

When Ordering Specify:

- Model Number
- Voltage and Frequency

Model Number	Capacity	Thread Size	A	C	D
* B-1763-1	1 OZ.	1/8 MALE N.P.T.	2	5 ³ / ₁₆	3/8
* B-1763-2		1/4 MALE N.P.T.	2	5 ¹ / ₄	7/16
* B-1763-3	2 1/2 OZ.	1/8 MALE N.P.T.	2	6 ³ / ₁₆	3/8
* B-1763-4		1/4 MALE N.P.T.	2	6 ¹ / ₄	7/16
* B-1763-5	5 OZ.	3/8 MALE N.P.T.	2	6 ³ / ₈	1/2
* B-1763-6		1/8 MALE N.P.T.	2 ⁷ / ₈	6 ³ / ₁₆	3/8
* B-1763-7	9 OZ.	1/4 MALE N.P.T.	2 ⁷ / ₈	6 ¹ / ₄	7/16
* B-1763-8		3/8 MALE N.P.T.	2 ⁷ / ₈	6 ³ / ₈	1/2
* B-1763-9	1 PT.	1/4 MALE N.P.T.	2 ⁷ / ₈	7 ¹ / ₂	7/16
* B-1763-10		3/8 MALE N.P.T.	2 ⁷ / ₈	7 ⁵ / ₈	1/2
* B-1763-11	1 QT.	1/2 MALE N.P.T.	2 ⁷ / ₈	7 ³ / ₄	5/8
* B-1764-1		1/4 MALE N.P.T.	3 ⁵ / ₈	8 ¹³ / ₁₆	7/16
* B-1764-2	1/2 GAL.	3/8 MALE N.P.T.	3 ⁵ / ₈	8 ¹⁵ / ₁₆	1/2
* B-1764-3		1/2 MALE N.P.T.	3 ⁵ / ₈	9 ¹ / ₁₆	5/8
* B-1764-4	1 QT.	1/2 MALE N.P.T.	3 ⁵ / ₈	12 ⁷ / ₁₆	5/8
* B-1764-7		1/2 MALE N.P.T.	5	13 ³ / ₁₆	5/8
* B-1763-12	1 OZ.	5/8-18 N.F. THD. FOR REMOTE MOUNTING WITH 1/8 FEMALE N.P.T. OUTLET	2	5 ⁹ / ₁₆	5/8
* B-1763-13	2 1/2 OZ.		2	6 ⁹ / ₁₆	5/8
* B-1763-14	5 OZ.		2 ⁷ / ₈	6 ⁹ / ₁₆	5/8
* B-1763-15	9 OZ.		2 ⁷ / ₈	7 ¹³ / ₁₆	3/8
* B-1764-5	1 PT.		3 ⁵ / ₈	9 ¹ / ₈	5/8
* B-1764-6	1 QT.		3 ⁵ / ₈	12 ¹ / ₂	5/8
* B-1764-8	1/2 GAL.		5	13 ³ / ₈	5/8

Model Number	Capacity	Thread Size	A	C	D	
* B-1875-1	2 1/2 OZ.	1/8 MALE N.P.T.	2	5 ¹³ / ₁₆	3/8	
* B-1875-2		1/4 MALE N.P.T.	2	5 ⁷ / ₈	7/16	
* B-1875-3	5 OZ.	3/8 MALE N.P.T.	2	5 ¹⁵ / ₁₆	1/2	
* B-1875-4		1/8 MALE N.P.T.	2 ¹ / ₂	6 ⁵ / ₁₆	3/8	
* B-1875-5	9 OZ.	1/4 MALE N.P.T.	2 ¹ / ₂	6 ³ / ₈	7/16	
* B-1875-6		3/8 MALE N.P.T.	2 ¹ / ₂	6 ⁷ / ₁₆	1/2	
* B-1875-7	1 PT.	1/4 MALE N.P.T.	3	7 ⁵ / ₁₆	7/16	
* B-1875-8		3/8 MALE N.P.T.	3	7 ³ / ₈	1/2	
* B-1875-9	1 QT.	1/2 MALE N.P.T.	3	7 ¹ / ₂	5/8	
* B-1875-10		1/4 MALE N.P.T.	3 ¹ / ₂	8 ⁵ / ₁₆	7/16	
* B-1875-11	1/2 GAL.	3/8 MALE N.P.T.	3 ¹ / ₂	8 ³ / ₈	1/2	
* B-1875-12		1/2 MALE N.P.T.	3 ¹ / ₂	8 ¹ / ₂	5/8	
* B-1875-13	1 QT.	1/2 MALE N.P.T.	4 ¹ / ₄	9 ⁷ / ₈	5/8	
* B-1765-1	1/2 GAL.	1/2 MALE N.P.T.	5 ¹ / ₂	12	5/8	
* B-1765-2	1 GAL.	1/2 MALE N.P.T.	5 ¹ / ₂	17	5/8	
* B-1875-16	2 1/2 OZ.	5/8-18 NF THD. FOR REMOTE MOUNTING WITH 1/8 FEMALE NPT OUTLET	2	6 ⁹ / ₁₆	5/8	
* B-1875-17	5 OZ.		2 ¹ / ₂	6 ¹ / ₁₆	5/8	
* B-1875-18	9 OZ.		3	7 ⁵ / ₈	5/8	
* B-1875-19	1 PT.		3 ¹ / ₂	8 ⁵ / ₈	5/8	
* B-1875-20	1 QT.		4 ¹ / ₄	9 ¹⁵ / ₁₆	5/8	
* B-1765-3	1/2 GAL.		1/2 MALE N.P.T.	5 ¹ / ₂	12 ¹ / ₁₆	5/8
* B-1765-4	1 GAL.		1/2 MALE N.P.T.	5 ¹ / ₂	17 ¹ / ₁₆	5/8

* Special - Please Consult Factory

DROP FEED MANUAL OILERS deliver a pre-adjusted rate of liquid, by gravity, from a reservoir, through an adjustable needle valve which has a friction lock to retain its setting.

These units are simple, yet efficient. A toggle shutoff is provided which starts and stops the liquid flow but will not affect the metering adjustment. The controlled feed rate can be observed through the lower sight chamber.

Durable, shatterproof acrylic reservoirs are for temperatures below 160° F. Crystal clear pyrex or polycarbonate reservoirs are available for temperatures below 225° F. A self-closing filler cap is located on top of the reservoir.

SPECIFICATIONS:

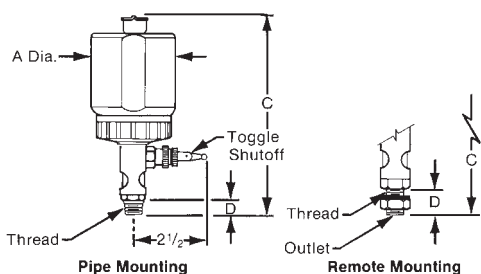
- Pressure Atmospheric Pressure
Gravity Feed Only
Reservoir and Sight Vented
- Temperature 160° F. Max. Acrylic
225° F. Max. Pyrex or Polycarbonate
- Metering Adjustable Needle Valve and
Toggle Shutoff
- Reservoir Acrylic, Polycarbonate or Pyrex
- Seals Buna-N
- Sight Glass
- Shank Steel, Plated
- Covers Aluminum Alloy or Polypropylene
- Body Aluminum Alloy



Style DOSF

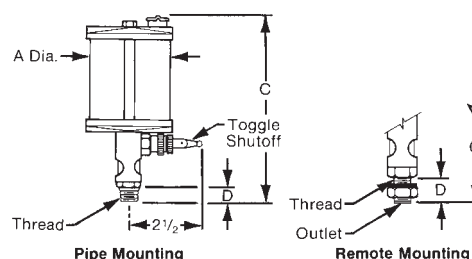


Style DOSF



When Ordering Specify:

- Catalog Number



When Ordering Specify:

- Catalog Number

Catalog No.	Capacity	Thread Size	A	C	D
B-1681-1	1 OZ.	1/8 MALE N.P.T.	2	4 ¹¹ / ₁₆	3/8
B-1681-2		1/4 MALE N.P.T.	2	4 ³ / ₄	7/16
B-1681-3	2 1/2 OZ.	1/8 MALE N.P.T.	2	5 ¹¹ / ₁₆	3/8
B-1681-4		1/4 MALE N.P.T.	2	5 ³ / ₄	7/16
B-1681-5		3/8 MALE N.P.T.	2	5 ⁷ / ₈	1/2
B-1681-6	5 OZ.	1/8 MALE N.P.T.	2 ⁷ / ₈	5 ¹¹ / ₁₆	3/8
B-1681-7		1/4 MALE N.P.T.	2 ⁷ / ₈	5 ³ / ₄	7/16
B-1681-8		3/8 MALE N.P.T.	2 ⁷ / ₈	5 ⁷ / ₈	1/2
B-1681-9	9 OZ.	1/4 MALE N.P.T.	2 ⁷ / ₈	7	7/16
B-1681-10		3/8 MALE N.P.T.	2 ⁷ / ₈	7 ¹ / ₄	1/2
B-1681-11		1/2 MALE N.P.T.	2 ⁷ / ₈	7 ¹ / ₄	5/8
B-1682-1	1 PT.	1/4 MALE N.P.T.	3 ⁵ / ₈	8 ⁵ / ₁₆	7/16
B-1682-2		3/8 MALE N.P.T.	3 ⁵ / ₈	8 ⁷ / ₁₆	1/2
B-1682-3		1/2 MALE N.P.T.	3 ⁵ / ₈	8 ⁹ / ₁₆	5/8
B-1682-4	1 QT.	1/2 MALE N.P.T.	3 ⁵ / ₈	11 ¹⁵ / ₁₆	5/8
B-1682-7	1/2 GAL.	1/2 MALE N.P.T.	5	12 ¹³ / ₁₆	5/8
B-1681-12	1 OZ.	5/8-18 N.F. THD. FOR REMOTE MOUNTING WITH 1/8 FEMALE N.P.T. OUTLET	2	5 ¹ / ₁₆	5/8
B-1681-13	2 1/2 OZ.		2	6 ¹ / ₁₆	5/8
B-1681-14	5 OZ.		2 ⁷ / ₈	6	5/8
B-1681-15	9 OZ.		2 ⁷ / ₈	7 ¹ / ₄	5/8
B-1682-5	1 PT.		3 ⁵ / ₈	8 ⁵ / ₈	5/8
B-1682-6	1 QT.		3 ⁵ / ₈	12	5/8
B-1682-8	1/2 GAL.		5	12 ⁷ / ₈	5/8

Catalog Number		Capacity	Thread Size	A	C	D
Acrylic	Pyrex					
* B-1876-1	B-1876-21	2 1/2 OZ.	1/8 MALE N.P.T.	2	5 ¹ / ₄	3/8
* B-1876-2	B-1876-22		1/4 MALE N.P.T.	2	5 ⁵ / ₁₆	7/16
* B-1876-3	B-1876-23		3/8 MALE N.P.T.	2	5 ³ / ₈	1/2
* B-1876-4	B-1876-24	5 OZ.	1/8 MALE N.P.T.	2 ¹ / ₂	5 ³ / ₄	3/8
* B-1876-5	B-1876-25		1/4 MALE N.P.T.	2 ¹ / ₂	5 ¹³ / ₁₆	7/16
* B-1876-6	B-1876-26		3/8 MALE N.P.T.	2 ¹ / ₂	5 ⁷ / ₈	1/2
* B-1876-7	B-1876-27	9 OZ.	1/4 MALE N.P.T.	3	6 ³ / ₄	7/16
* B-1876-8	B-1876-28		3/8 MALE N.P.T.	3	6 ¹³ / ₁₆	1/2
* B-1876-9	B-1876-29		1/2 MALE N.P.T.	3	6 ¹⁵ / ₁₆	5/8
B-1876-10	B-1876-30	1 PT.	1/4 MALE N.P.T.	3 ¹ / ₂	7 ³ / ₄	7/16
B-1876-11	B-1876-31		3/8 MALE N.P.T.	3 ¹ / ₂	7 ¹³ / ₁₆	1/2
B-1876-12	B-1876-32		1/2 MALE N.P.T.	3 ¹ / ₂	7 ¹⁵ / ₁₆	5/8
B-1876-13	B-1876-33	1QT.	1/2 MALE N.P.T.	4 ¹ / ₄	9 ⁵ / ₁₆	5/8
B-1715-1	B-1715-5	1/2 GAL.	1/2 MALE N.P.T.	5 ¹ / ₂	11 ⁷ / ₁₆	5/8
B-1715-2	—	1 GAL.	1/2 MALE N.P.T.	5 ¹ / ₂	16 ⁷ / ₁₆	5/8
* B-1876-16	B-1876-36	2 1/2 OZ.	5/8-18 N.F. THD. FOR REMOTE MOUNTING WITH 1/8 FEMALE N.P.T. OUTLET	2	5 ⁵ / ₈	5/8
* B-1876-17	B-1876-37	5 OZ.		2 ¹ / ₂	6 ¹ / ₈	5/8
* B-1876-18	B-1876-38	9 OZ.		3	7 ¹ / ₁₆	5/8
B-1876-19	B-1876-39	1 PT.		3 ¹ / ₂	8 ¹ / ₁₆	5/8
B-1876-20	B-1876-40	1QT.		4 ¹ / ₄	9 ³ / ₈	5/8
B-1715-3	B-1715-7	1/2 GAL.		5 ¹ / ₂	11 ¹ / ₂	5/8
B-1715-4	—	1 GAL.		5 ¹ / ₂	16 ¹ / ₂	5/8

* Special - Please Consult Factory

Multiple Feed Electro Oilers

MULTIPLE FEED ELECTRO OILERS have been revolutionized by utilizing a new manifold, multiple sight feed valve system. This exclusive and unique feature allows, for the first time, the option of changing the units in the field by merely stacking them together.

Liquid is released, by gravity, from a reservoir, through a normally closed solenoid valve to the new modular stacked multiple sight feed valves. Each valve is a complete unit that interlocks and seals with the preceding valve.

Up to 24 sight feed valves can be separately adjusted and the setting retained by means of a friction lock. Drop feeding of liquid to widely separated points can be controlled and observed from one central location.

The highest standard of quality is built into these Oil-Rite water resistant solenoid valves. The compact solenoid is usually wired across the line of the drive motor. The solenoid can be operated by a separate switch or timer for intermittent operation.

SPECIFICATIONS:

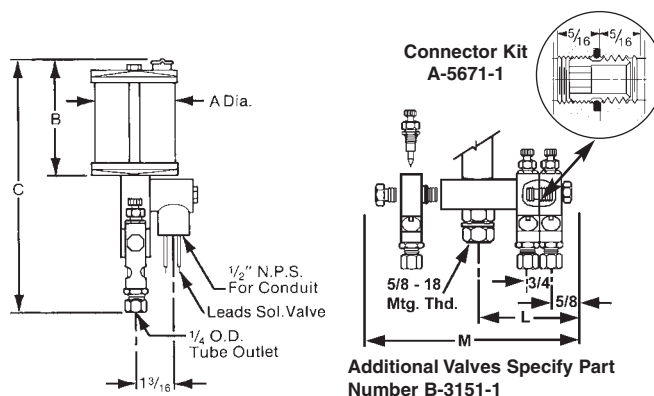
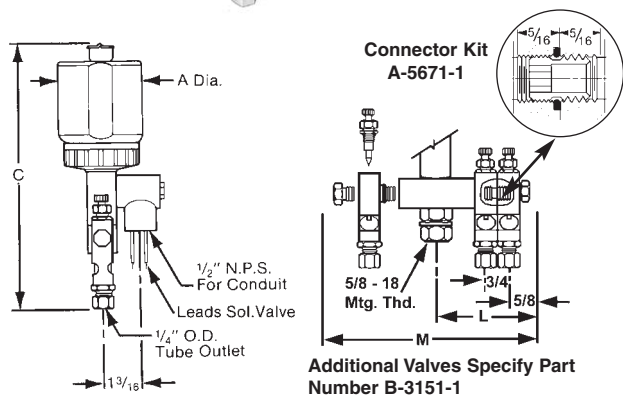
- Pressure Atmospheric Pressure
Gravity Feed Only
Reservoir and Sight Are Vented
- Temperature 160° F. Max. Acrylic
225° F. Max. Pyrex or Polycarbonate
- Metering Adjustable Needle Valve with Solenoid Shutoff
- Reservoir Acrylic, Polycarbonate or Pyrex
- Valves Aluminum Alloy
- Seals Buna-N (Other Material Available)
- Sight Glass
- Shank Steel, Plated
- Covers Aluminum Alloy or Polypropylene
- Body Aluminum Alloy
- Connector Kit Buna-N (Other Material Available)



Style DE



Style DE



When Ordering Specify:

- Model Number
- Voltage and Frequency
- Number of Feeds

When Ordering Specify:

- Model Number
- Voltage and Frequency
- Number of Feeds

Model Number	Capacity	A	C
Polycarbonate			
B-3192-2	9 OZ.	2 ⁷ / ₈	9 ¹ / ₁₆
B-3192-3	1 PT.	3 ⁵ / ₈	10 ¹ / ₁₆
B-3192-4	1 QT.	3 ⁵ / ₈	13 ⁷ / ₁₆
B-3192-5	1/2 GAL.	5	14 ¹ / ₈

Feeds	2	3	4	5	6	12	24
L	2	2 ³ / ₄	2 ³ / ₄	3 ¹ / ₂	3 ¹ / ₂	5 ³ / ₄	10 ¹ / ₄
M	3 ¹⁵ / ₁₆	4 ¹¹ / ₁₆	5 ⁷ / ₁₆	6 ³ / ₁₆	6 ¹⁵ / ₁₆	11 ⁷ / ₁₆	20 ⁷ / ₁₆

Model Number	Capacity		A	B	C
	Acrylic	Pyrex			
* B-3152-1	B-3152-11	5 OZ.	2 ¹ / ₂	3 ³ / ₈	7 ³ / ₄
* B-3152-2	B-3152-12	9 OZ.	3	4 ³ / ₁₆	8 ⁹ / ₁₆
B-3152-3	B-3152-13	1 PT.	3 ¹ / ₂	5 ³ / ₁₆	9 ⁹ / ₁₆
B-3152-4	B-3152-14	1 QT.	4 ¹ / ₄	6 ³ / ₄	11 ¹ / ₈
B-3152-5	B-3152-15	1/2 GAL.	5 ¹ / ₂	8 ³ / ₄	13 ¹ / ₈
B-3152-6	—	1 GAL.	5 ¹ / ₂	13 ³ / ₄	18 ¹ / ₈

Feeds	2	3	4	5	6	12	24
L	2	2 ³ / ₄	2 ³ / ₄	3 ¹ / ₂	3 ¹ / ₂	5 ³ / ₄	10 ¹ / ₄
M	3 ¹⁵ / ₁₆	4 ¹¹ / ₁₆	5 ⁷ / ₁₆	6 ³ / ₁₆	6 ¹⁵ / ₁₆	11 ⁷ / ₁₆	20 ⁷ / ₁₆

* Special - Please Consult Factory

Multiple Feed Manual Oilers

MULTIPLE FEED MANUAL OILERS have been revolutionized by utilizing a new manifold, multiple sight feed valve system. This exclusive and unique feature allows, for the first time, the option of changing the units in the field by merely stacking them together.

Liquid is released, by gravity, from a reservoir, through a toggle shutoff valve which is located below the reservoir, to the new modular stacked multiple sight feed valves. Each valve is a complete unit that interlocks and seals with the preceding valve.

Up to 24 sight feed valves can be separately adjusted and the setting retained by means of a friction lock. Drop feeding of liquid to widely separated points can be controlled and observed from one central location.

SPECIFICATIONS:

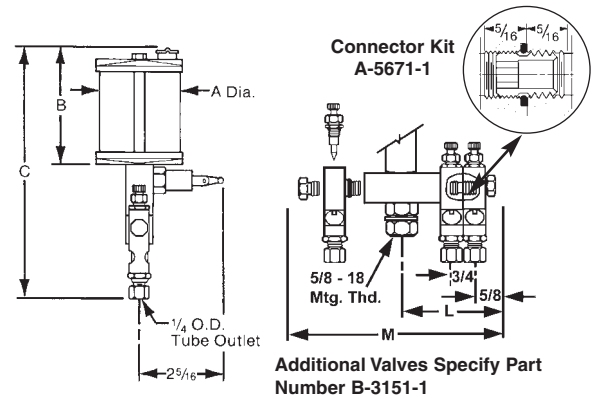
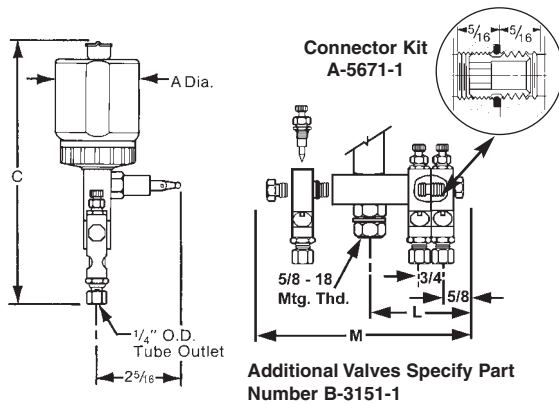
- Pressure Atmospheric Pressure
Gravity Feed Only
Reservoir and Sight Are Vented
- Temperature 160° F. Max. Acrylic
225° F. Max. Pyrex or Polycarbonate
- Metering Adjustable Needle Valve with Toggle Shutoff
- Reservoir Acrylic, Polycarbonate or Pyrex
- Valves Aluminum Alloy
- Seals Buna-N
- Sight Glass
- Shank Steel, Plated
- Covers Aluminum Alloy or Polypropylene
- Body Aluminum Alloy
- Connector Kit Buna-N (Other Material Available)



Style DM



Style DM



When Ordering Specify:

- Model Number
- Number of Feeds

Model Number	Capacity	A	C
Polycarbonate			
B-3193-2	9 OZ.	2 ⁷ / ₈	9 ¹ / ₁₆
B-3193-3	1 PT.	3 ⁵ / ₈	10 ¹ / ₁₆
B-3193-4	1QT.	3 ⁵ / ₈	13 ⁷ / ₁₆
B-3193-5	1/2 GAL.	5	14 ¹ / ₈

Feeds	2	3	4	5	6	12	24
L	2	2 ³ / ₄	2 ³ / ₄	3 ¹ / ₂	3 ¹ / ₂	5 ³ / ₄	10 ¹ / ₄
M	3 ¹⁵ / ₁₆	4 ¹¹ / ₁₆	5 ⁷ / ₁₆	6 ³ / ₁₆	6 ¹⁵ / ₁₆	11 ⁷ / ₁₆	20 ⁷ / ₁₆

When Ordering Specify:

- Model Number
- Number of Feeds

Model Number	Capacity	A	B	C	
					Acrylic
* B-3153-1	B-3153-11	5 OZ.	2 ¹ / ₂	3 ³ / ₈	7 ³ / ₄
* B-3153-2	B-3153-12	9 OZ.	3	4 ³ / ₁₆	8 ⁹ / ₁₆
B-3153-3	B-3153-13	1 PT.	3 ¹ / ₂	5 ³ / ₁₆	9 ⁹ / ₁₆
B-3153-4	B-3153-14	1 QT.	4 ¹ / ₄	6 ³ / ₄	11 ¹ / ₈
B-3153-5	B-3153-15	1/2 GAL.	5 ¹ / ₂	8 ³ / ₄	13 ¹ / ₈
B-3153-6	—	1 GAL.	5 ¹ / ₂	13 ³ / ₄	18 ¹ / ₈

Feeds	2	3	4	5	6	12	24
L	2	2 ³ / ₄	2 ³ / ₄	3 ¹ / ₂	3 ¹ / ₂	5 ³ / ₄	10 ¹ / ₄
M	3 ¹⁵ / ₁₆	4 ¹¹ / ₁₆	5 ⁷ / ₁₆	6 ³ / ₁₆	6 ¹⁵ / ₁₆	11 ⁷ / ₁₆	20 ⁷ / ₁₆

* Special - Please Consult Factory

Full Flow Electro Dispensers

FULL FLOW ELECTRO DISPENSERS dispense liquid from a reservoir, by gravity, through an electro shutoff valve.

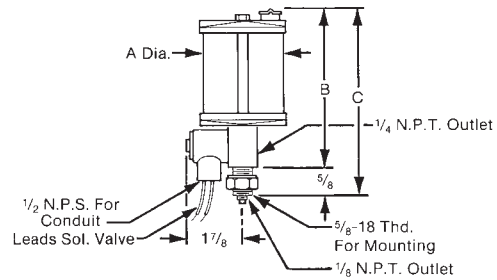
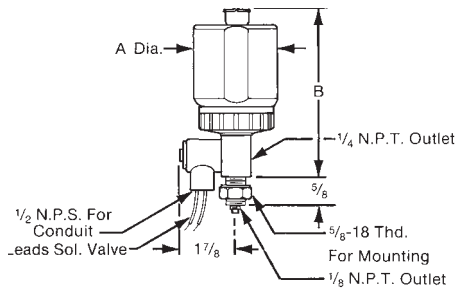
Designed to serve as a central reservoir of an oiling system, additional sight feed valves are needed for the regulation of liquid flow.

Flow is controlled by a normally closed solenoid valve. The compact solenoid is usually wired across the line of the drive motor providing automatic shutoff. The solenoid valve can be operated by a separate switch or timer for intermittent operation.

Durable, shatterproof acrylic reservoirs are for temperatures below 160° F. Crystal clear pyrex or polycarbonate reservoirs are available for temperatures below 225° F. A self-closing filler cap is provided on top of the reservoir.

SPECIFICATIONS:

- Pressure Atmospheric Pressure
Gravity Feed Only
Reservoir is Vented
- Temperature 160° F. Max. Acrylic
225° F. Max. Pyrex or Polycarbonate
- Metering Full Flow with Solenoid Shutoff
- Reservoir Acrylic, Polycarbonate or Pyrex
- Seals Buna-N
- Shank Aluminum Alloy
- Covers Aluminum Alloy or Polypropylene
- Body Aluminum Alloy
- Port 1/4" Dia.



When Ordering Specify:

- Model Number
- Voltage and Frequency

When Ordering Specify:

- Model Number
- Voltage and Frequency

Model Number	Capacity	A	B
Polycarbonate			
B-1733-1	1 OZ.	2	4 ³ / ₁₆
B-1733-2	2 ¹ / ₂ OZ.		5 ³ / ₁₆
B-1733-3	5 OZ.	2 ⁷ / ₈	5 ¹ / ₈
B-1733-4	9 OZ.		6 ³ / ₈
B-1733-5	1 PT.	3 ⁵ / ₈	7 ¹¹ / ₁₆
B-1733-6	1 QT.		11 ¹ / ₁₆
B-1733-7	1 ¹ / ₂ GAL.		11 ¹⁵ / ₁₆

Model Number		Capacity	A	B	C
Acrylic	Pyrex				
* B-2084-2	B-2084-12	2 ¹ / ₂ OZ.	2	4 ³ / ₄	5 ³ / ₈
* B-2084-3	B-2084-13	5 OZ.	2 ¹ / ₂	5 ¹ / ₄	5 ⁷ / ₈
* B-2084-4	B-2084-14	9 OZ.	3	6 ³ / ₁₆	6 ¹³ / ₁₆
B-2084-5	B-2084-15	1 PT.	3 ¹ / ₂	7 ⁹ / ₁₆	7 ¹³ / ₁₆
B-2084-6	B-2084-16	1 QT.	4 ¹ / ₄	8 ¹ / ₂	9 ¹ / ₈
B-2084-7	B-2084-17	1 ¹ / ₂ GAL.	5 ¹ / ₂	10 ⁵ / ₈	11 ¹ / ₄
B-2084-8	—	1 GAL.	5 ¹ / ₂	15 ⁵ / ₈	16 ¹ / ₄

* Special - Please Consult Factory



Full Flow Manual Dispensers

FULL FLOW MANUAL DISPENSERS dispense liquid, by gravity, from a reservoir, through a toggle shutoff valve.

Designed to serve as a central reservoir of an oiling system, additional sight feed valves are needed for the regulation of liquid flow.

Flow is controlled by a toggle shutoff valve mounted below the dispenser.

Durable, shatterproof acrylic reservoirs are for temperatures below 160° F. Crystal clear pyrex or polycarbonate reservoirs are available for temperatures below 225° F. A self-closing filler cap is provided on top of the reservoir.

SPECIFICATIONS:

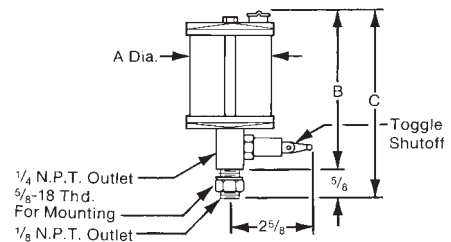
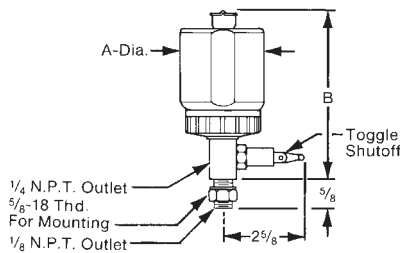
- Pressure Atmospheric Pressure
Gravity Feed Only
Reservoir is Vented
- Temperature 160° F. Max. Acrylic
225° F. Max. Pyrex or Polycarbonate
- Metering Full Flow with Toggle Shutoff
- Reservoir Acrylic, Polycarbonate or Pyrex
- Seal Buna-N
- Shank Aluminum Alloy
- Covers Aluminum Alloy or Polypropylene
- Body Aluminum Alloy
- Port 1/4" Dia.



Style DFF



Style DFF



When Ordering Specify:

- Catalog Number

Catalog Number	Capacity	A	B
Polycarbonate			
B-1734-1	1 OZ.	2	4 ³ / ₁₆
B-1734-2	2 ¹ / ₂ OZ.		5 ³ / ₁₆
B-1734-3	5 OZ.	2 ⁷ / ₈	5 ¹ / ₈
B-1734-4	9 OZ.		6 ³ / ₈
B-1734-5	1 PT.	3 ⁵ / ₈	7 ¹¹ / ₁₆
B-1734-6	1 QT.		11 ¹ / ₁₆
B-1734-7	1/2 GAL.		11 ¹⁵ / ₁₆

When Ordering Specify:

- Catalog Number

Catalog Number		Capacity	A	B	C
Acrylic	Pyrex				
* B-2083-2	B-2083-12	2 1/2 OZ.	2	4 ³ / ₄	5 ³ / ₈
* B-2083-3	B-2083-13	5 OZ.	2 ¹ / ₂	5 ¹ / ₄	5 ⁷ / ₈
* B-2083-4	B-2083-14	9 OZ.	3	6 ³ / ₁₆	6 ¹³ / ₁₆
B-2083-5	B-2083-15	1 PT.	3 ¹ / ₂	7 ⁹ / ₁₆	7 ¹³ / ₁₆
B-2083-6	B-2083-16	1 QT.	4 ¹ / ₄	8 ¹ / ₂	9 ¹ / ₈
B-2083-7	B-2083-17	1/2 GAL.	5 ¹ / ₂	10 ⁵ / ₈	11 ¹ / ₄
B-2083-8	—	1 GAL.	5 ¹ / ₂	15 ⁵ / ₈	16 ¹ / ₄

* Special - Please Consult Factory

