

KR8
0107
0006



KR PRESSURITE GREASE GUN

INSTRUCTION MANUAL

INTRODUCTION

Thank you for purchasing a Macnaught KR Pressurite Grease gun . The KR Pressurite grease gun has been designed for use with the Macnaught model K6 Mini-Lube and K3 Super-Lube Manual Greasing Systems.

Please read and retain this instruction manual to assist you in the operation and maintenance of this quality product.

GENERAL INFORMATION

This manual assists you in operating and maintaining your new KR Pressurite grease gun. The information contained in this instruction manual will help you ensure many years of dependable performance and trouble free operation.

Please take a few moments to read through this manual before operating your KR grease gun. If you experience problems with the product, refer to the Maintenance and Trouble Shooting sections of this manual. If you require any further assistance please contact your local Macnaught distributor or Macnaught.

DESCRIPTION

The KR Pressurite grease gun is a High Pressure / High Volume grease gun. When set on the high pressure setting you can reach greasing pressures up to 10,000psi (69 MPa).

The KR Pressurite gun is normally operated on the HI-VOLUME switch position. Should high pressure be required to clear a blocked or seized grease nipple, simply push the switch on the gun to the HI-PRESSURE position.

Note: To select either high pressure or high volume, refer to Fig 1.

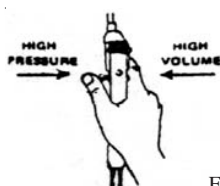


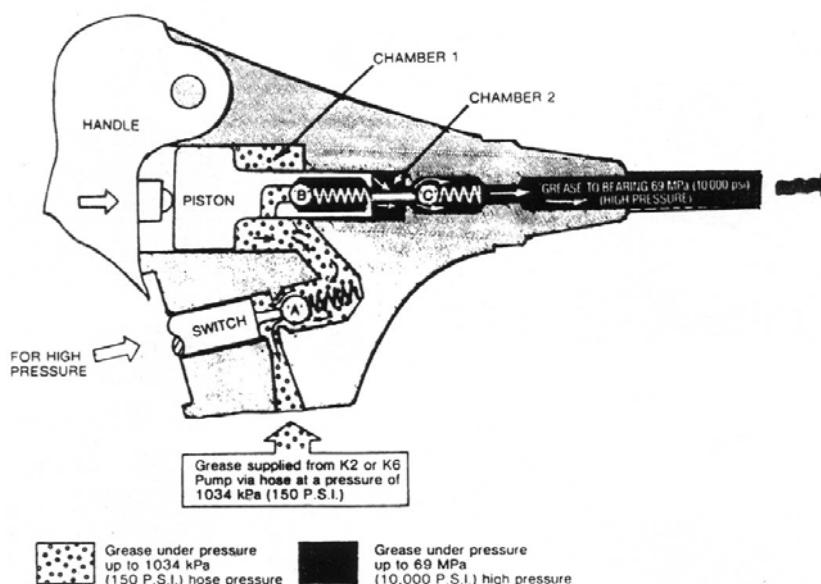
Fig 1



KR PRESSURITE GUN FEATURES

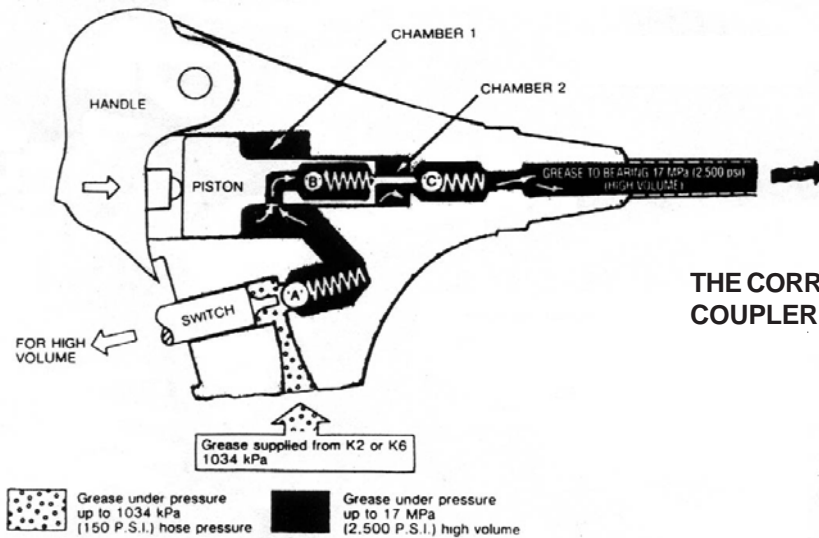
Operation on the High Pressure Setting

- 1) The switch is pushed forward and lifts ball 'A' off its seat.
- 2) As the piston is pushed forward by the handle, the grease in chamber 1 is pushed back past ball 'A' into the supply hose.
- 3) The grease in chamber 2 (small volume) is pressurised up to 69MPa (10,000 psi). This pressure seats ball B and lifts ball C, then forces grease through to the equipment being greased.



Operation on the High Volume Setting

- 1) The switch is withdrawn allowing ball 'A' to seat.
- 2) The piston is pushed forward by the handle. As ball 'A' is seated, grease cannot return back into the hose. Therefore both volumes of grease in chambers 1 and 2 are combined (high volume) and pressurised for delivery to the equipment requiring greasing.
- 3) During the operation balls 'B' and 'C' are forced off their seats by both volumes of grease passing.



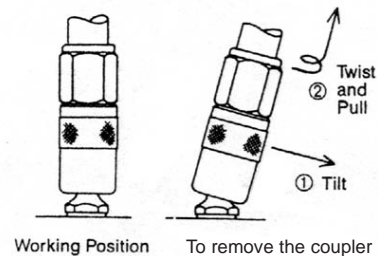
GENERAL MAINTENANCE

When the KR gun has been serviced and the trouble is found to have been caused by dirt in the valves, the pump unit should also be cleaned out thoroughly to eliminate the dirt at its source.

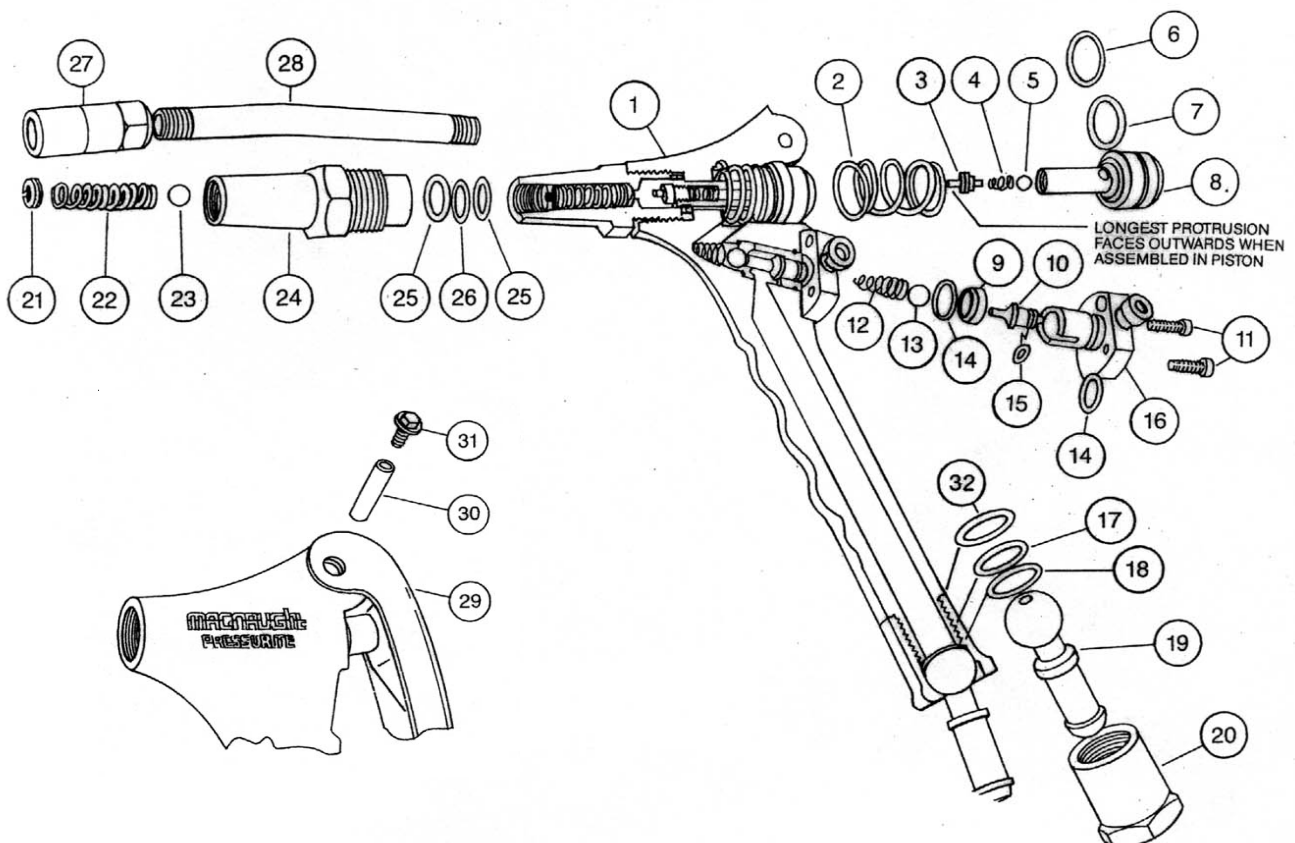
Dirt and foreign matter (lint, etc.) can seriously affect the operation of this unit.

Dismantling and reassembly of this unit should only be attempted in clean conditions.

THE CORRECT METHOD FOR REMOVING THE KY COUPLER FROM A GREASE NIPPLE



KR GUN PARTS DIAGRAM



KR GUN PARTS LIST

ORDER FOR REPLACEMENT					
Item	PART No.	No. off	NEW PART/SET	KIT. REF	DESCRIPTION
			KR-1 K (KIT A)		OVERHAUL KIT
			KR-2 K (KIT B)		PISTON KIT
1	KR2	1	KR2		GUN BODY
2	KR3	1	KR-2K incl N326, N65	A & B	PISTON SPRING
3	KR1	1		A & B	VALVE STEM (PISTON)
4	KH5	1		A & B	SPRING, PISTON CHECK
5	N403	1		A & B	7/32" BALL, PISTON
6	KR5	1		A & B	GLYDE RING
7	BS111	1		A & B	O' RING FOR GLYD RING
8	KR4	1		A & B	PISTON
9	KH12	1		A	VALVE SEAT
10	KH17	1			OPERATING PLUNGER CONTROL
11	N81	2			CAP SOCKET 1/2" X3/16" WHT
12	KH1	1	KR12s	A	SPRING, (INLET CHECK)
13	N402	1	KR13s incl BS017	A	5/16" BALL, INLET
14	BS013	2		A	O' RING, SEAL BODY
15	BS008	1		A	O' RING, PLUNGER CONTROL
16	KH13	1			CONTROL BODY ASSEMBLY
17	N113	1		A	WASHER, HOSE ADAPTOR
18	BS113	1		A	O' RING, HOSE ADAPTOR
19	KR6	1			BALL END, HOSE ADAPTOR
20	KH77	1			BALL SOCKET RETAINER
21	KD64	1			KEEPER SCREW (OUTLET)
22	KD61	1		A	SPRING (OUTLET)
23	N400	1	KH22s	A	1/4" BALL (OUTLET)
24	KH22	1	KY KH23s KR14s		OUTLET BODY
25	KH8	2		A	TEFLON BACK-UP WASHER
26	BS012	1		A	O' RING PISTON
27	KY	1			COUPLER
28	KH23	1			EXTENSION TUBE
29	KH19	1			HANDLE
30	N326	1		A & B	HANDLE PIN
31	N65	2		A & B	DRIVE SCREW
32	BS017	1		A	RETAINER O' RING

TROUBLE SHOOTING GUIDE

TROUBLE	CAUSE	REMEDY
A) Coupler Leaks	a) Dirt under the seat of the outlet ball (23) Note: There is nothing wrong with the coupler itself.	<p>a) Change to high volume and strike the handle sharply. If it still leaks, remove the extension tube (28), spring keeper screw (21), spring (22) and ball (23).</p> <p>Clean the seat and replace the ball, spring and spring keeper screw (part way). Prime the pump, and screw in the spring keeper screw until the grease stops leaking. Then screw in an extra 2 full turns. Reassemble extension tube (28)</p> <p>Note: Too many turns makes the gun hard to operate, and too few turns allows the gun to leak. If the coupler still leaks replace the complete outlet body assembly.</p> <p>When refitting the outlet body (24) hold the handle (29) in the closed position. This enables the back-up washers and o'ring seals to enter squarely onto the piston.</p>
	b) The valve stem (3) has worked loose and is holding the outlet ball (23) off its seat	b) Remove the handle pin (30), and handle (29). Remove piston (8), re-tighten valve stem (3) or replace the complete piston assembly
B) Gun leaks at the back end of the piston.	Glyd ring worn	Remove the handle pin (30) and handle (29). Remove the old piston and replace with a new piston assembly.
C) Gun fails to deliver grease on the high pressure setting	a) Dirt under the delivery ball (5) or damaged ball seat in the piston (8)	a) Change over to the high volume setting and strike the handle hard to shift dirt off the seat. If there is no improvement, replace the piston assembly.
	b) Seals (25, 26) are worn	b) Replace seals (25, 26) in the outlet body.
	c) Valve stem (3) has become loose from the piston (8)	c) Replace piston assembly

TROUBLE SHOOTING GUIDE (CONTINUED)

TROUBLE	CAUSE	REMEDY
D) Gun fails to deliver grease on the high volume setting.	a) Dirt on the inlet valve seat (9) Note: This fault will decrease volume.	a) Remove the control body (16), tap out the valve seat (9), o'ring (14), ball (13) and spring (12). Clean parts and replace in the correct order.
	b) Operating plunger control (10) sticking in body (16).	b) Replace the control body assembly.
E) The control push rod in the control body leaks.	O'ring (15) damaged or worn.	Remove the control body and replace worn or damaged parts.
F) The gun leaks at the swivel joint.	Worn seals (18,32).	Replace worn or damaged swivel seals
G) The gun, when on the high volume setting is too slow or hard to operate.	a) Springs (2 or 4) may have collapsed and is blocking the flow of grease.	a) Fit KR-1K overhaul kit
	b) Grade of grease is too heavy.	b) Change grease to NLGI No 2 grease or lighter.
	c) Too much compression on the outlet spring (22).	c) Reset the spring keeper screw (Refer to A - a) of the trouble shooting guide) or replace the outlet body assembly.

TECHNICAL SPECIFICATIONS

The KR Grease gun is suitable for use with Macnaught models K3 and K6 Lubrication systems.

The KR Grease Gun is recommended for use with greases up to and including NLGI No 2 consistency.

The KR Grease Gun will deliver greasing pressures up to 10,000 psi (69 MPa) on the high pressure setting



Macnaught Pty Ltd
PO Box 90 Arncliffe NSW 2205 Australia
Telephone (02) 9567 0401
Facsimile (02) 9597 7773
Email: sales@macnaught.com.au
Web: www.macnaught.com.au

macnaught warranty



- Macnaught Pty Ltd ("Macnaught") warrants that all products manufactured by Macnaught and/or supplied by Macnaught under the "Macnaught" brand, excluding M-Series positive displacement meters ("Meters") and components subject to wear, will be free from any defects caused by faulty materials or workmanship ("Warranty") for a period of 5 years from the date of purchase of the product.
- For products (excluding Meters) which carry the "Macnaughtdesign" endorsement, an additional Warranty period of 5 years applies to all mechanical components (excluding electronic and electrical components), giving a total Warranty period of 10 years.
- For Meters, the Warranty period is 12 months from the date of purchase of the product.
- For components contained in all products which are usually subject to wear from normal operation of the products (such as o-rings, seals, springs, hoses and batteries), the Warranty period is 12 months from the date of purchase of the relevant product.
- For products and components which are not manufactured by Macnaught and are supplied by Macnaught under a brand name other than "Macnaught", the Warranty period is the longer of 12 months from the date of purchase of the relevant product and the period of the manufacturer's warranty.
- The warranties contained in clauses 1, 2, 3, 4 and 5 above are conditional on the purchaser, during the relevant Warranty period:
 - delivering to Macnaught a detailed notice setting out full details of any defect in any product and details of the date and place of purchase (together with copies of purchase receipts and/or other supporting documents), and
 - at the purchaser's own cost, returning the defective product to the nearest authorised Macnaught service centre.
- Subject to compliance by the purchaser with clause 6, Macnaught shall, at its option, repair or replace any product or component found defective by its inspection by reason of faulty materials or workmanship of Macnaught.
- This Warranty does not cover the failure of products, parts or components which, in the sole judgment of the Macnaught, arises other than from faulty materials or workmanship of Macnaught, including misuse, abrasion, corrosion, negligence, accident, substitution of non-Macnaught parts, unauthorised modification, improper use, storage or handling, faulty installation or tampering by the purchaser or any third party.
- If Macnaught's inspection discloses no defect in material or workmanship, repair or replacement and return (at Macnaught's sole option) will be made at customary charges, which will be advised to the purchaser.
- Macnaught's liability and the purchaser's rights under this Warranty shall be limited to the repair or replacement of defective products or components and particular, shall not extend to any direct, special, indirect or consequential damage or losses of any other warranties.
- The foregoing Warranty supersedes, voids and is in lieu of any other warranties. This Warranty does not form part of, nor does it constitute, a contract between Macnaught and the end-user or purchaser. It is additional to any warranty given by the seller of the products. This Warranty does not exclude, limit, restrict or modify the non-excludable rights or remedies conferred upon the end-user or purchaser, or the non-excludable duties or liabilities imposed on the seller or Macnaught, by Part V, Division 2, 2A, and Part VA of the Trade Act 1974 (Commonwealth) or other rights conferred on the end-user or purchaser or duties or liabilities imposed upon Macnaught.