

TWIN PEDESTAL METAL HOSE REEL

INSTRUCTION SHEET

INTRODUCTION

Thank you for purchasing a Macnaught Twin Pedestal heavy duty metal hose reel.

The Macnaught range of twin pedestal heavy duty metal hose reels have been designed using the highest quality, heavy gauge materials and are fitted with purpose specific hose and swivels. There are models available for Air, Oil, Grease and Diesel.

GENERAL INFORMATION

The information contained in this instruction manual will help ensure many years of trouble free operation.

Please take a few moments to read through this instruction manual before installing your new metal hose reel. If you require further assistance please contact your nearest Macnaught distributor or Authorised Macnaught Service Centre.

IMPORTANT INFORMATION

Read this safety information carefully before use.

Please keep these instructions in a convenient location for future reference.

Your safety is important to us. Please read and follow all the safety instructions listed below.



CAUTION

- 1) Make sure the line pressure does not exceed the rated operating pressure of your model hose reel, refer specifications.
- 2) Exposure of the skin directly to pressurized air or fluid could result in severe bodily injury.
- 3) Before carrying out any maintenance turn off and disconnect the supply line to the reel and carefully release the hose line pressure.
- 4) Use soap and water when checking for leaks.

INSTALLATION

- 1) For overhead ceiling mounting: Install reels at least 3m (10 feet) above the floor.
- 2) You will need to purchase appropriate hardware for mounting your new reel.
- 3) The reel base has four 1/2" (12.7mm) drilled holes for mounting on a suitable flat surface.
- 4) Your reel has both angle adjustable hose roller guides.



Fig 1

To adjust the angle of the roller guides .

- a) Loosening the bolts on either side of the roller guide
- b) Adjust the guide to the required angle
- c) Re- tighten the bolts

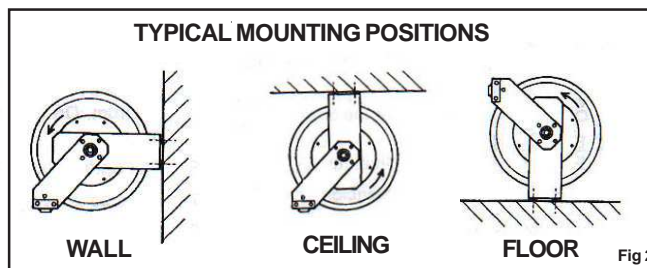


Fig 2

- 5) Using the four holes in the base, mount the reel in the desired location. Be sure to use appropriate hardware and tighten securely.
- 6) Apply Teflon tape or pipe sealant to supply line threads, attach to reel inlet and tighten. The other end of incoming line can now be connected to desired supply source. Tighten stopper bolts, and unlatch the reel.
- 7) Apply Teflon tape or pipe sealant to outlet fitting on reel hose, then attach to desired tool, or nozzle. Check connection for leakage, also check hose reel for correct operation. (see Operation section.)
- 8) If hose stopper adjustment is required, pull hose from reel and allow to latch at desired length. Loosen stopper bolts and slide stopper to a position close to the hose guide. Re-tighten stopper bolts and check operation.

OPERATION

- 1) Check reel for correct operation by slowly pulling out the hose. A "clicking" noise will be heard every half revolution of the drum.
- 2) To latch the reel, pull out the hose and allow it to retract after hearing the first, second or third "click".
- 3) To unlatch, slowly pull out the hose until the "clicking" noise stops, then let the hose retract until the hose stop rests against the hose guide.



CAUTION

Always hold on to the hose while it is rewinding.

- 4) Periodically check the hose condition for wear or damage, and check the swivel fitting for leakage. Replace any worn, damaged, or leaking parts.

ADJUST SPRING TENSION

- 1) Pull out approximately 2m (6ft) of hose and allow the drum to latch.
- 2) Remove hose stopper from hose, and feed hose back through the guide.
- 3) Wrap the hose one time around the drum to increase tension or un-wrap hose one time from drum to decrease tension.
- 4) Re-insert hose through guide, and install stopper onto the hose end.
- 5) Unlatch the Drum and check tension. Pull hose from reel, and adjust stopper position if necessary.

REPLACEMENT OF SWIVEL SEALS

- 1) Turn off the pump and release hose line pressure.
- 2) Disconnect supply line from swivel inlet.
- 3) Remove the outlet nozzle, gun or tool and hose stopper. Unlatch the reel and carefully allow the hose to slowly rewind until there is no spring tension remaining.
- 4) Manually unwind the hose assembly from the drum.
- 5) Remove the circlip from the swivel shaft, and remove the swivel body from the shaft.
- 6) Replace the swivel seals and re-fit the swivel body onto the reel axle.
- 7) Manually rotate the drum assembly (away from the roller guides) and manually recoil the hose onto the drum.
- 8) Add tension to the reel by carefully rotating the drum and hose assembly (towards the roller guides) 4 complete turns, slide the hose through the roller guides and allow the reel to latch.
- 9) Fit the hose stopper to the hose end, release the drum latch, and slowly allow the hose to slowly rewind onto the reel.
- 10) Re-connect inlet supply line.
- 11) Check all connections for leaks.

HOSE REPLACEMENT

- 1) Turn off and disconnect the supply to reel and release hose line pressure.
- 2) Pull out approximately 2m (6ft) of hose and allow the drum to latch.

- 3) Remove the outlet nozzle, gun or tool and hose stopper. Unlatch the reel and carefully allow the hose to slowly rewind until there is no spring tension remaining.
- 4) Manually unwind the hose assembly from the drum. Carefully disconnect and remove the hose from shaft joint inside the reel.
- 5) Connect your new hose assembly to shaft joint in the reel.
- 6) Manually rotate the drum assembly (away from the roller guides) and manually recoil the hose onto the drum.
- 7) Add tension to the reel by carefully rotating the drum and hose assembly (towards the roller guides) 4 complete turns, slide the hose through the roller guides and allow the reel to latch.
- 8) Fit the hose stopper to the hose end, release the drum latch, and slowly allow the hose to slowly rewind onto the reel.

Note: Final spring adjustment is accomplished by adding or removing wraps of hose around the drum. Refer to "Adjust Spring Tension".

SPRING CANISTER REMOVAL

- 1) Pull out the hose approximately 1m (3ft) and latch the reel
- 2) Remove the outlet nozzle, gun or tool and hose stopper.
- 3) Carefully unlatch the reel and firmly hold the drum. Allow the drum to slowly unwind until it stops and no spring tension remains.
- 4) Carefully remove the nuts and washers located around the drum assembly.



CAUTION

- 5) Carefully remove both the front and back spring cannister covers together as an assembly. **Remember there is a large spring inside which can cause severe injury if not handled correctly.**
- 6) Carefully sit the drum canister down so as the flat inner plate flat is facing up.
- 7) Carefully remove the flat inner plate to expose the spring.
- 8) Inspect and replace the complete drum assembly if the spring is found to be damaged.



CAUTION

DO NOT under any circumstances remove the spring from the canister.

SPRING CANISTER REPLACEMENT

- 1) Slide the flat inner plate over the shaft on the reel.
- 2) Check the correct orientation of the spring locating boss. Remove the boss from the middle of the spring cannister and slide the boss onto the shaft on the reel.
- 3) Carefully hold the center of the spring up in the middle of the drum, at the same time slide the drum assembly over the center boss on the shaft.

Note: The spring will automatically locate itself into the center boss when you re-tension the reel.

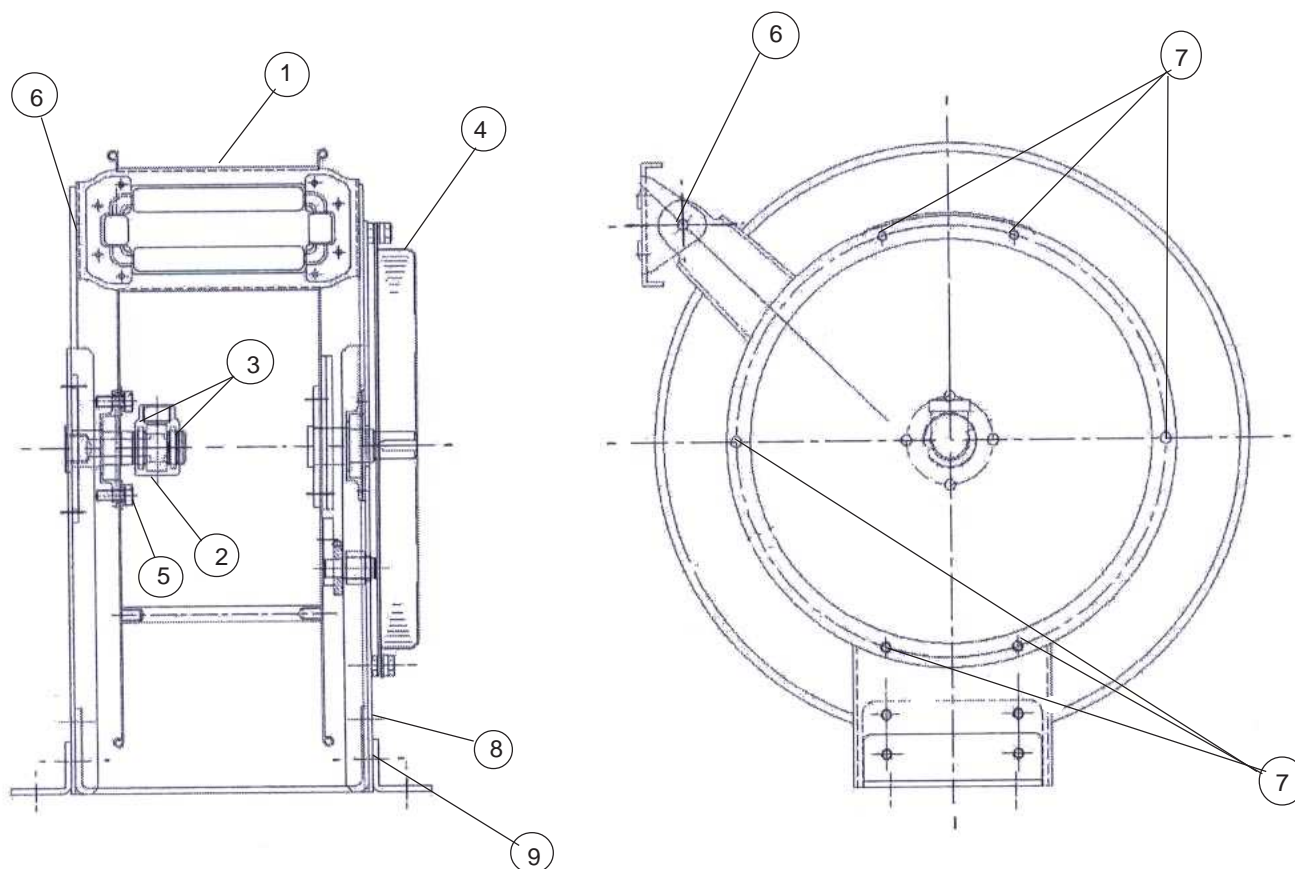
- 4) Replace all the washers and nuts around the outside of the drum assembly and securley tighten.
- 5) Turn the drum anti-clockwise until you feel the spring start to tension, then turn the drum three complete turns and latch the drum.
- 6) Feed the hose through the hose guide, fit the hose stopper, then unlatch the drum. The hose stopper should now sit snugly against the hose guide.

LATCH REPLACEMENT

- 1) Working from the swivel side of the reel, remove the 4 bolts holding the swivel body to the axle, then remove the swivel body.

- 2) Remove the circlip holding the axle bearing in place.
- 3) Remove the nut and bolt holding the roller guide to the support arm.
- 4) Remove the 4 large bolts holding the support arm to the mounting bracket located below the swivel body.
- 5) Slide the support arm off the axle.
- 6) Inspect the latch assembly, and replace any worn or damaged parts.
- 7) Assembly is a reversal of the disassembly procedure.

PARTS DIAGRAM



ITEM NO	DESCRIPTION	REEL MODEL NUMBER											
		MATP1220	MATP1230	MATP1920	MDTP1920	MDTP2520	MDTP3820	MGTP0615	MGTP0915	MOTP1215	MOTP1220	MOTP1920	WPTP1050
1	ROLLER GUIDE SET	*	*	*	*	*	*	*	*	*	*	*	*
2	SWIVEL ASSEMBLY	RW39S	RW49S	RW59S	RHA39S	RHA49S	ROA69S	RHA09S	RHA19SG	RHA35S	RHA39S	RHA59S	RW39MF
3	SWIVEL SEAL SET (not shown)	RW40S	RW50S	RW60S	RHA40S	RHA50S	ROA70S	RHA10S	RHA20SG	RHA36S	RHA40S	RHA60S	RW40MF
4	SPRING DRUM ASSEMBLY	*	*	*	*	*	*	*	*	*	*	*	*
5	LATCH SET	*	*	*	*	*	*	*	*	*	*	*	*
6	SCREW AND NUT SET	*	*	*	*	*	*	*	*	*	*	*	*
7	NUT AND BOLT	*	*	*	*	*	*	*	*	*	*	*	*
8	BOLT	*	*	*	*	*	*	*	*	*	*	*	*
9	BOLT	*	*	*	*	*	*	*	*	*	*	*	*
10	HOSE ASSEMBLY (not shown)	HPW41S	HPW51S	HPW61S	HPA41S	HPA51S	HPO71S	HPA11S	HPA21SG	HPA37S	HPA41S	HPA61S	HPW42MF
11	HOSE STOPPER (not shown)	RW42S	RW52S	RW62S	RHA42S	RHA52S	N/A	RHA12S	HPA22SG	RHA38S	RHA42S	RHA62S	N/A

*

TROUBLE SHOOTING GUIDE

TROUBLE	CAUSE	REMEDY
Hose will not fully retract	A) Outlet nozzle, gun or tool is too heavy	A) Add spring tension. See "Adjust Spring Tension"
	B) Spring is fatigued	B) Add spring tension. See "Adjust Spring Tension" Replace Spring canister if required, see "Replacement of Spring Canister"
	C) Replacement hose is too long	C) Fit correct length hose (Refer Hose to specifications)
Hose will not retract at all	A) Spring has broken or has lost all tension	A) Replace Spring canister. See "Replacement of Spring Canister"
Reel will not latch	A) Incorrect operation	A) Reel latches on first, second or third "click". After the third click the reel automatically rewinds
	B) Latch assembly is worn.	B) Replace the latch assembly
Fluid leaks from the swivel	A) Swivel seals are worn	A) Replace swivel seals. See "Replacement of Swivel Seals".

SPECIFICATIONS

Model	Description	Hose Specifications			Reel Inlet Thread Size	Hose Outlet	Max Operating Temperature
		I.D	Length	Max Working Pressure			
MDTP2520	DIESEL	25mm (1")	20m	3450kPa (500psi)	1" BSP	1" BSP	80 DEG C
MATP1220	AIR / WATER	12.5mm (1/2")	20m	2070kPa (300psi)	1/2" BSP	1/2" BSP	80 DEG C
MATP1920	AIR / WATER	19mm (3/4")	20m	2070kPa (300psi)	3/4" BSP	3/4" BSP	100 DEG C
MOTP1220	OIL	12.5mm (1/2")	20m	6900kPa (1000psi)	1/2" BSP	1/2" BSP	100 DEG C
MOTP1920	OIL	19mm (3/4")	20m	6900kPa (1000psi)	3/4" BSP	3/4" BSP	100 DEG C
MGTP0615	GREASE	6mm (1/4")	15m	34450kPa (5000psi)	1/4" BSP	1/4" BSP	100 DEG C
MGTP0915	GREASE	9mm (3/8")	15m	27600kPa (4000psi)	3/8" BSP	3/8" BSP	100 DEG C


macnaught
 Macnaught Pty Ltd
 PO Box 90 Arncliffe NSW 2205 Australia
 Telephone (02) 9567 0401
 Facsimile (02) 9597 7773
 Email: sales@macnaught.com.au
 Web: www.macnaught.com.au

macnaught warranty

Macnaught Pty Ltd ("Macnaught") warrants that all products manufactured by Macnaught and/or supplied by Macnaught under the "Macnaught" brand, excluding M-SERIES, MEC-SERIES and WM-SERIES positive displacement meters ("Meters") and components subject to wear, will be free from any defects caused by faulty materials or workmanship ("Warranty") for a period of 5 years from the date of purchase of the product.

For products (excluding Meters) which carry the "Macnaught design" endorsement, an additional Warranty period of 5 years applies to all mechanical components (excluding electronic and electrical components), giving a total Warranty period of 10 years.

For Meters, the Warranty period is 2 years from the date of purchase of that product.

For components contained in all products which are usually subject to wear from normal operation of the products (such as o-rings, seals, bushes, springs, hoses and batteries), the Warranty period is 12 months from the date of purchase of the relevant product.

For products and components which are not manufactured by Macnaught and are supplied by Macnaught under a brand name other than "Macnaught", the Warranty period is the longer of 12 months from the date of purchase of the relevant product and the period of the manufacturer's warranty.

The warranties contained in clauses 1, 2, 3, 4 and 5 above are conditional on the purchaser, during the relevant Warranty period:

delivering to Macnaught a detailed notice setting out full details of any defect in any product and details of the date and place of purchase (together with copies of purchase receipts and/or other supporting documents); and

at the purchaser's own cost, returning the defective product to the nearest authorised Macnaught service centre.

Subject to compliance by the purchaser with clause 6, Macnaught shall, at its option, repair or replace any product or component found defective by its inspection by reason of faulty materials or workmanship of Macnaught.

This Warranty does not cover the failure of products, parts or components which, in the sole judgment of Macnaught, arises other than from faulty materials or workmanship of Macnaught, including misuse, abrasion, corrosion, negligence, accident, substitution of non-Macnaught parts, unauthorised modification, improper use, storage or handling, faulty installation or tampering by the purchaser or any third party.

If Macnaught's inspection discloses no defect in material or workmanship, repair or replacement and return (at Macnaught's sole option) will be made at customary charges, which will be advised to the purchaser.

Macnaught's liability and the purchaser's rights under this Warranty shall be limited to the repair or replacement of defective products or components and in particular, shall not extend to any direct, special, indirect or consequential damage or losses of any nature.

The foregoing Warranty supersedes, voids and is in lieu of all or any other warranties.

This Warranty does not form part of, nor does it constitute, a contract between Macnaught and the end-user or purchaser. It is additional to any warranty given by the seller of the products. This Warranty does not exclude, limit, restrict or modify the non-excludable rights or remedies conferred upon the end-user or purchaser, or the non-excludable duties or liabilities imposed on the seller or Macnaught, by Part V, Divisions 2, 2A and Part VA of the Trade Practices Act 1974 (Commonwealth) or other legislative provisions. Macnaught otherwise excludes, to the extent permitted by law, any rights conferred on the end-user or purchaser or duties or liabilities imposed upon Macnaught.