

04

HOSE REELS

HOSE REELS	_____	30
10 M OPEN TYPE REELS	_____	31
15 M OPEN TYPE REELS	_____	31
HIGH CAPACITY REELS	_____	32
ENCLOSED TYPE REELS	_____	32
COMPACT REELS FOR AIR AND WATER	_____	33
HOSE REEL ACCESSORIES AND BRACKETS	_____	33
HOSE REEL KITS	_____	36

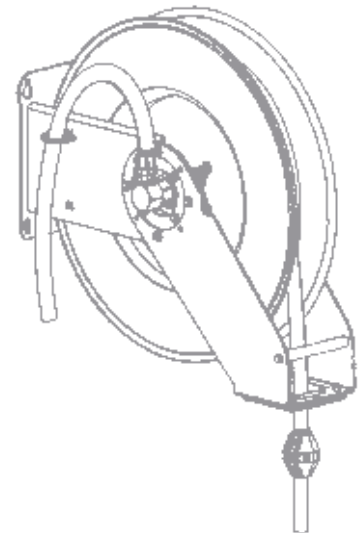


Wherever long hoses are required, it is strongly recommended to use hose reels. Longer hose life, increased safety and improved efficiency are some of the advantages from using hose reels.

Once installed, the hose is always ready and available but can be retracted out of the way when not in use. Hose free floors reduce the risk of injuries. Hose reels also aid to hose identification and consequently they contribute to improve the efficiency.

Hose reels can be installed on the wall or ceiling or special frameworks but in order to comply with CE directives they should be at least at 2.5 m from the floor. In some cases reels can also be mounted on top of tanks or on workbenches.

Samoa offers a wide range of hose reels for covering all the media supply needs in the workplace. Models with different hose lengths and diameter are available suitable for compressed air, low and high pressure water, lubricants, grease, etc.



All Samoa reels have:

- 1- Brass forged shaft, compatible with a wide range of fluids. It assures a corrosion free and a leak proof operation, even with high pressure applications.
- 2- Special steel spring for a long and trouble free life.
- 3- Very robust all steel construction.
- 4- No special maintenance required.

Hose supplied with the hose reels can be easily identified with the aid of the following chart:

Code	Hose type	Application
PR	Reinforced polyurethane	Air, nitrogen, water up to 20 bar (285 psi)
T	Nitrile rubber with one textile braid	Air, nitrogen, water up to 15 bar (215 psi)
2T	Nitrile rubber with two textile braids	Air, nitrogen, water up to 20 bar (285 psi)
W	Nitrile rubber with one steel braid	Oil, water, air, antifreeze, etc. up to 75 bar (1.100 psi)
2W	Nitrile rubber with two steel braids	Grease, oil, etc up to 350 bar (5.000 psi)
WH	Nitrile rubber with one steel braid	High pressure hot water, up to 250 bar (3.570 psi) and 150°C (300° F)

501 200

10 M OPEN TYPE HOSE REELS - 501 SERIES

Open type hose reels - 10 m. maximum hose capacity

Double arm automatic rewind hose reels for air, water, oil or grease. All metal construction with forged brass shaft for corrosion free and leak proof operation even at high pressure. Hose recoiling is driven by a special steel spring, which provides a long life and trouble free operation.

Positionable arms for optimum operation in any mounting position: wall, ceiling, floor or tank. Maximum hose capacity: 10 m x 1/2" hose. Models with hose include a 0.8 m long inlet hose.



Models

APPLICATION	HOSE DATA			CONNECTION THREADS		WORKING PRESSURE BAR	PART N.°
	TYPE	Ø	LENGTH (M)	IN (BSP)	OUT (BSP)		
Air / Low pressure water	T	3/8"	10 (33')	1/2" (M)	1/4" (M)	15 (220 psi)	501 100
	N.A.			N.A.		(1)	501 198
Oil	W	1/2"	10 (33')	1/2" (M)	1/2" (M)	75 (1.100 psi)	501 200
	N.A.			N.A.		(1)	501 298
Grease	2W	1/4"	10 (33')	1/2" (M)	1/4" (M)	350 (5.100 psi)	501 300
	N.A.			N.A.		(1)	501 398

(1) Models supplied without hose. Maximum working pressure is the minimum working pressure of the individual components used, normally the hose. Use hoses as specified in pages 32 and 35.

504 200

15 M OPEN TYPE HOSE REELS - 504 SERIES

Heavy Duty open type hose reels - 15 m. maximum hose capacity

Heavy duty double arm automatic rewind hose reels for air, water, oil or grease. All metal reinforced construction with forged brass shaft for corrosion free and leak proof operation even at high pressure. Hose recoiling is driven by a special steel spring, which provides a long life and trouble free operation.

Positionable arms for an optimum operation in any mounting position: wall, ceiling, floor or tank.

Maximum hose capacity: 15 m x 1/2" hose. Models with hose include a 0.8 m long inlet hose.



Models

APPLICATION	HOSE DATA			CONNECTION THREADS		WORKING PRESSURE BAR	PART N.°
	TYPE	Ø	LENGTH (M)	IN (BSP)	OUT (BSP)		
Air / Low pressure Water	T	1/2"	15 (50')	1/2" (M)	1/2" (M)	15 (220 psi)	504 100
	N.A.			N.A.		(1)	504 199
Oil	W	1/2"	15 (50')	1/2" (M)	1/2" (M)	75 (1.100 psi)	504 200
	N.A.			N.A.		(1)	504 299
Grease	2W	1/4"	15 (50')	1/2" (M)	1/4" (M)	350 (5.100 psi)	504 300
	2W	3/8"	15 (50')	1/2" (M)	1/4" (M)	350 (5.100 psi)	504 301
	N.A.			N.A.		(1)	504 399
High pressure water	WH	3/8"	15 (50')	1/2" (M)	3/8" (M)	250 (3.670 psi)	504 400
	N.A.			N.A.		(1)	504 499

(1) Models supplied without hose. Maximum working pressure is the minimum working pressure of the individual components used, normally the hose. Use hoses as specified in pages 32 and 35.

505 200

HIGH CAPACITY REELS - 505 SERIES



High volume hose reels - 15 m. x 3/4" hose capacity

Double arm, high volume, automatic rewind hose reels for air, water, or oil. All metal reinforced. Full 3/4" port shaft and swivel so no flow restrictions. Hose recoiling is driven by a special steel spring, which provides a long life and trouble free operation. Positionable arms for an optimum operation in any mounting position: wall, ceiling, floor or tank. Maximum hose capacity: 20 m x 1/2" hose or 15 m x 3/4" hose. Models with hose include a 0.8 m long inlet hose.

Models

APPLICATION	HOSE DATA			CONNECTION THREADS		WORKING PRESSURE BAR	PART N.º
	TYPE	Ø	LENGTH (M)	IN (BSP)	OUT (BSP)		
Air / Oil /	W	1/2"	20 (65')	1/2" (M)	1/2" (M)	75 (1.100 psi)	505 200
Water /	W	3/4"	15 (50')	3/4" (M)	3/4" (M)	75 (1.100 psi)	505 201
Diesel	(2)			N.A.		(1)	505 298
	(3)			N.A.		(1)	505 299

(1) Models supplied without hose. Maximum working pressure is the minimum working pressure of the individual components used, normally the hose. Use hoses as specified in pages 32 and 35.

(2) Model for 1/2" hose. Maximum capacity: 20 m (65').

(3) Model for 3/4" hose. Maximum capacity: 15 m (50').

502 200

ENCLOSED TYPE REELS - 502 SERIES



Individually enclosed type hose reels.

Individually enclosed automatic rewind hose reels for air, water, oil or grease. Two corrosion proof die cast aluminium shields enclose the reel forming an attractive and very rigid unit that resists bending distortion due to angular pull. All metal construction with forged brass shaft for a corrosion free and leak proof operation even at high pressure. Hose recoiling is driven by a special steel spring, which provides a long life and trouble free operation.

Positionable mounting brackets for an optimum operation in any mounting position: wall, ceiling, floor or tank.

Maximum hose capacity: 8 m with 1/2" hose or 13 m with 3/8" hose. Models with hose include a 0.8 m long inlet hose.

Models

APPLICATION	HOSE DATA			CONNECTION THREADS		WORKING PRESSURE BAR	PART N.º
	TYPE	Ø	LENGTH (M)	IN (BSP)	OUT (BSP)		
Air /	T	3/8"	8 (26')	1/2" (M)	3/8" (M)	15 (220 psi)	502 100
	Low pressure	T	3/8"	13 (43')	1/2" (M)	3/8" (M)	15 (220 PSI)
Water	8 m x 1/2" max			N.A.		(1)	502 198
	13 m x 3/8" max			N.A.		(1)	502 199
Oil	W	1/2"	8 (26')	1/2" (M)	1/2" (M)	75 (1.100 psi)	502 200
	W	3/8"	10 (33')	1/2" (M)	1/2" (M)	75 (1.100 psi)	502 203
	W	3/8"	13 (43')	1/2" (M)	1/2" (M)	75 (1.100 psi)	502 201
	8 m x 1/2" max.			N.A.		(1)	502 298
	13 m x 3/8" max.			N.A.		(1)	502 299
Grease	2W	1/4"	8 (26')	1/2" (M)	1/4" (M)	350 (5.100 psi)	502 300
	2W	1/4"	13 (43')	1/2" (M)	1/4" (M)	350 (5.100 psi)	502 301
	8 m x 1/2" max.			N.A.		(1)	502 398
	13 m x 3/8" max.			N.A.	(1)		502 299
High pressure water	WH	3/8"	13 (43')	1/2" (M)	3/8" (M)	250 (3.670 psi)	502 400
	13 m x 3/8" max.			N.A.		(1)	502 499

(1) Models supplied without hose. Maximum working pressure is the minimum working pressure of the individual components used, normally the hose. Use hoses as specified in pages 32 and 35.

500 110

COMPACT REELS FOR AIR AND WATER



Compact steel cased hose reel for air and water. All reels include pivoting wall bracket and textile braided polyurethane hose. Maximum working pressure: 20 bar (285 psi).

500 110 - Compact air hose reel with 12 m x 8 mm hose

Compact hose reel for air and water with 12 m x 8 mm (hose). Includes 0.6 m inlet hose. Inlet thread: 3/8" BSP (M). Outlet thread: 1/4" BSP (M).

500 111 - Compact air hose reel with 10 m x 10 mm hose

Compact hose reel for air and water with 10 m x 10 mm hose. Includes 0.6 m inlet hose. Inlet thread: 3/8" BSP (M). Outlet thread: 3/8" BSP (M).

HOSES

APPLICATION	HOSE TYPE	LENGTH	INTERNAL DIAMETER	WORKING PRESSURE	PART N.º	
Compressed air/ water	T	0.8 m	3/8"	15 bar (220 psi)	750 340	
		8.0 m			750 341	
		10.0 m			750 343	
		13.0 m			750 342	
		15.0 m			750 344	
Oil / water / diesel	W	8.0 m	3/8"	75 bar (1.100 psi)	750 314	
		10.0 m				
		13.0 m			750 313	
		0.8 m			1/2"	750 311
			10.0 m	1/2"		750 312
			15.0 m			750 310
			20.0 m			750 318
			0.8 m			3/4"
		15.0 m			750 315	
Grease	2W	0.8 m	1/4"	350 bar (7.100 psi)	750 306	
		8.0 m			750 307	
		10.0 m			750 302	
		13.0 m			750 308	
		15.0 m			750 303	
		15.0 m			3/8"	
High pressure water 150°C	WH	0.8 m	3/8"	250 bar (3.670 psi)	750 321	
		13.0 m			750 320	
		15.0 m			750 322	

522 100

HOSE STOPPERS



522 100 - Hose stopper

For 3/8" hoses.

522 200 - Hose stopper

For 1/2" hoses.

522 300 - Hose stopper

For 1/4" hoses.

360 111

PIVOTING BRACKET

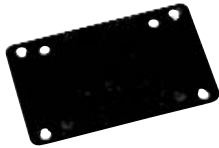


360 111 - Hose reel pivoting bracket

For open type hose reels (501 and 504 series) and individually enclosed reels (502 series).

360 113

HOSE REEL BRACKETS FOR 200 L TROLLEYS



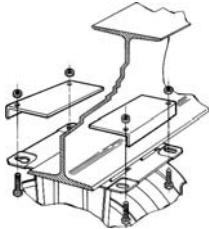
Allow fixing a hose reel to trolleys 432 814 and 432 000.

360 113 - Hose reel bracket for trolley 432 814

360 135 - Hose reel bracket for trolley 432 800

360 116

HOSE REEL BEAM BRACKET



360 116 - Hose reel beam bracket

To hang an open reel 501 or 504 series or an enclosed reel 502 series from an "I" beam with flange between 100 to 175 mm. Nuts and bolts included.

360 117

HOSE REEL BANK BRACKETS



For mounting open type hose reels (501 and 504 series) or enclosed reels (502 series) in a bank either hanging from the ceiling or fixed to a wall. Hose reel bank brackets are predrilled and threaded for an optimum hose reel installation. They help to reduce installation time as less drilling is required and a perfect alignment of the reels is easily obtained.

Brackets can also be fixed to an "I" beam with flanges between 100 and 175 mm. using two additional beam mounting brackets for the 2 and 3 reels bracket and three beam brackets for the 5 reel bracket.

360 114 - 2 hose reel bank bracket

360 115 - 3 hose reel bank bracket

360 117 - 5 hose reel bank bracket

360 118 - "I" beam bracket

360 161

HOSE REEL STAND



360 161 - Hose reel stand

To mount one or two open type hose reels (501 and 504 series) or enclosed type reels (502 series) when there is no wall available and it is not possible to hang the reels from the ceiling.

For full range of reel stands please contact Samoa.

360 160

HOSE REEL MOUNTING FRAMES

Especially designed to mount up to six open type hose reels (501 and 504 series) or enclosed type reels (502 series) in a bank. Recommended when it is not convenient to hang the reels from the ceiling or to service two lubrication bays simultaneously.

360 160 - 6 hose reels mounting frame

Allows mounting of up to six hose reels in a bank. Includes paper roll support, drip collector tray and two drawers with lock. Dimensions: 2.500 x 1.640 x 700 mm.

360 162 - 3 hose reels mounting frame

Allows mounting of up to three hose reels in a bank. Includes drip collector tray. Dimensions: 2.400 x 1.200 x 310 mm.



360 122 / 360 127 / 360 126

GUN HOLDERS AND DRIP POCKETS

360 122 - Wall mounted drip pocket

360 127 - Wall mounted drip pocket and gun holder

360 126 - Gun holder for hose reels



512 252

INDIVIDUALLY ENCLOSED HOSE REEL KITS - 502 SERIES



Models

APPLICATION	HOSE REEL	CONTROL GUN	PART N.º
Compressed air	502 100	Air coupling	512 102
	502 101	Air coupling	512 103
Water	502 100	Low pressure water gun	512 150
	502 101	Low pressure water gun	512 151
Oil / antifreeze	502 200	Oil control gun (363 077)	512 200
	502 200	Hose end meter (365 603)	512 255
	502 200	Preset hose end meter (600 021)	512 252
Grease	502 300	Grease control gun with Z swivel (413 080)	512 300

511 255

10 M OPEN TYPE HOSE REEL KITS - 501 SERIES



Models

APPLICATION	HOSE REEL	CONTROL GUN	PART N.º
Compressed air	501 100	Air coupling	511 101
Water	501 100	Low pressure water gun	511 150
Oil / antifreeze	501 200	Oil control gun (363 077)	511 200
	501 200	Hose end meter (365 603)	511 255
	501 200	Preset hose end meter (600 021)	511 252
Grease	501 300	Grease control gun with Z swivel (413 080)	511 300

513 259

15 M OPEN TYPE HOSE REEL KITS - 504 SERIES



Models

APPLICATION	HOSE REEL	CONTROL GUN	PART N.º
Compressed air	504 100	Air coupling	513 154
Water	504 100	Low pressure water gun	513 155
Oil / antifreeze	504 200	Oil control gun (363 077)	513 248
	504 200	Hose end meter (365 603)	513 259
	504 200	Preset hose end meter (600 021)	513 247
Grease	504 300	Grease control gun with Z swivel (413 080)	513 350

515 201

HIGH CAPACITY HOSE REEL KITS - 505 SERIES



Models

APPLICATION	HOSE REEL	CONTROL GUN	PART N.º
Oil	505 200 (20 m x 1/2")	Oil control gun (363 079)	515 216
		Hose end meter (365 603)	515 214
		Preset hose end meter (600 021)	515 215
Oil / diesel	505 201 (15 m x 3/4")	Hose end meter (365 603)	515 210
		High delivery hose end meter (365 652)	515 201
		Preset hose end meter (600 021)	515 213