

# ELECTRIC MOTOR OPERATED, LIQUID DELIVERY

Ultimate in liquid adjustability and output accuracy, the Electric motor operated versions of PurgeX® are used in applications where compressed air is not available or where direct interface to machine controls is desired. Lubrication cycles are easily synchronized to machine operation. Quality engineering and manufacturing provide simplicity of operation and reliability over long periods of time. Precise volumetric delivery is achieved with a positive displacement design and adjustment capability.

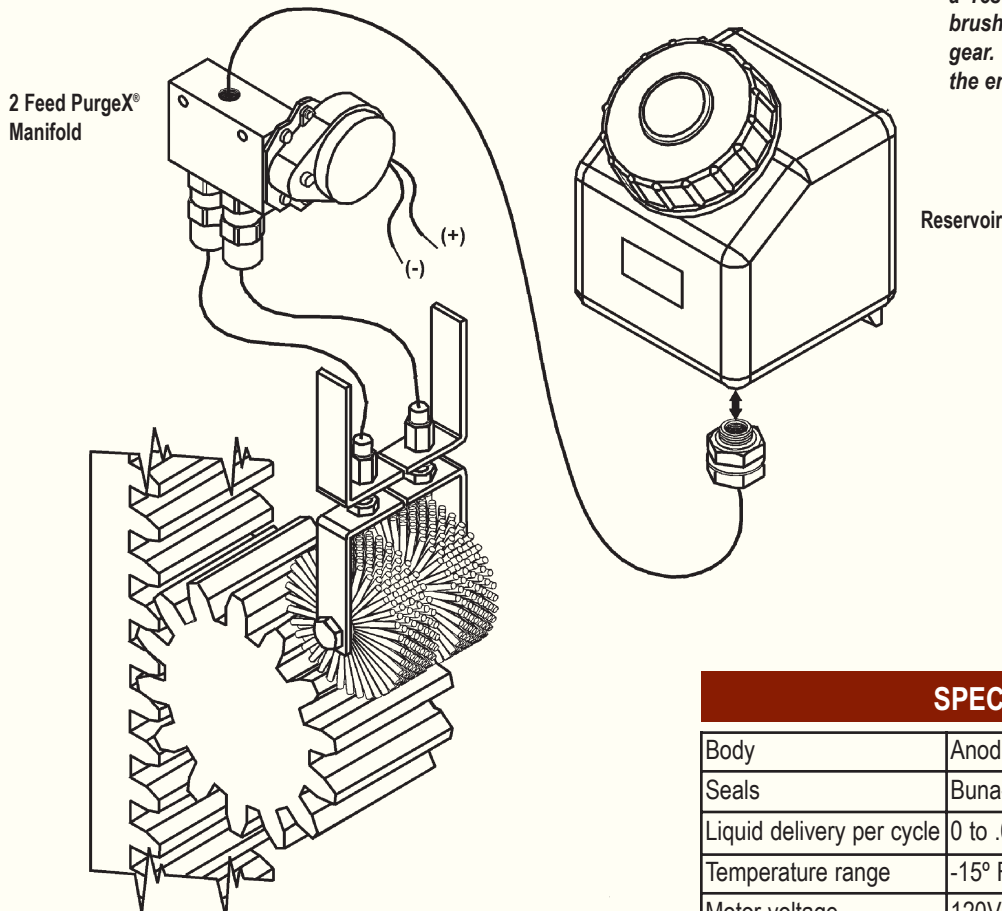
- With each complete revolution of the motor (RPM), one lubrication cycle occurs, dispensing a maximum of .009 cubic inches (.15 cc's), per feed point.
- Standard motor speed is one revolution per minute. Other motor speeds are available on request.
- Standard voltage is 120V/60Hz and different voltages can also be supplied.
- Single piece piston pump provides the ultimate in liquid adjustability and output accuracy. The pump is electrically driven and requires no other external energy source.



**B3429**

## TYPICAL INSTALLATION

Installation for B3429 (Liquid)



*In this lubrication application, using only a reservoir, a PurgeX® pump and nylon brushes, liquid is delivered to a pinion gear. The brushes disperse the liquid over the entire surface area of the gears.*

## SPECIFICATIONS

Body	Anodized aluminum alloy (other materials available)
Seals	Buna-N & Viton® (other materials available)
Liquid delivery per cycle	0 to .009 cu. in., adjustable
Temperature range	-15° F to 120° F
Motor voltage	120V/60Hz (other voltages available)
Current draw	.025 amps at 120 volts
Motor speed	1 RPM (other speeds available)

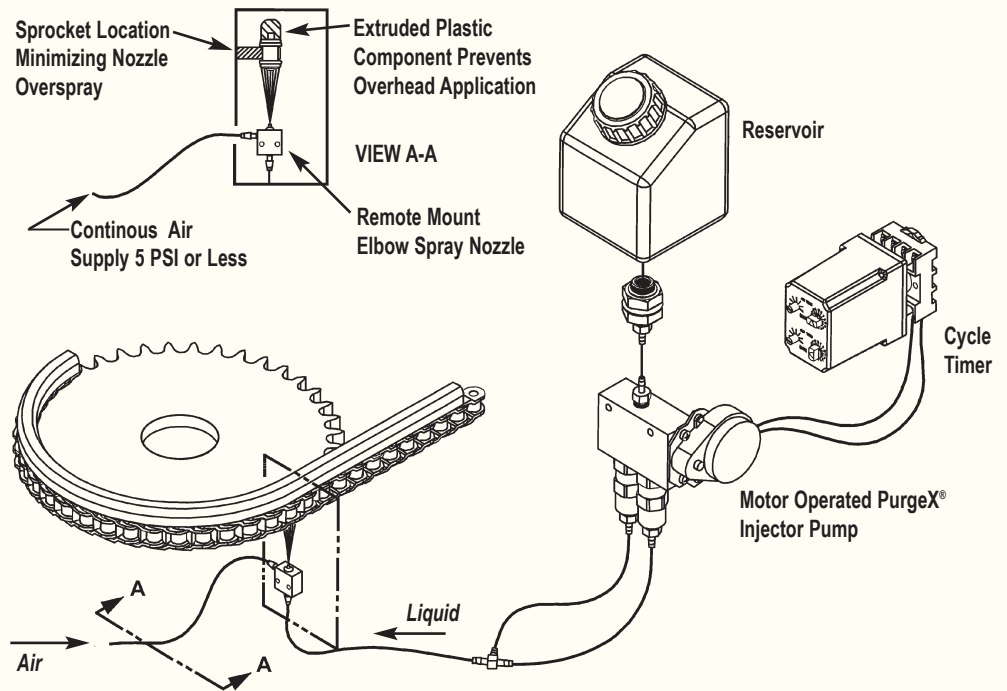
**OIL-RITE • 1-920-682-6173**  
[www.oilrite.com](http://www.oilrite.com)

## HOW TO ORDER

1. Determine number of lubrication points and select corresponding PurgeX<sup>®</sup> model with the correct number of feeds.
2. Select liquid reservoir with appropriate capacity.
3. Use machine controls or other remote signal to provide power to electric motor. (Cycle rate is continuous as long as power is supplied to the motor.)
4. Standard, 1 RPM motor. Other speeds available upon request.
5. Select tubing and fittings.

See pages 18 and 19 for accessory model numbers

### Installation for B3429 (Liquid)

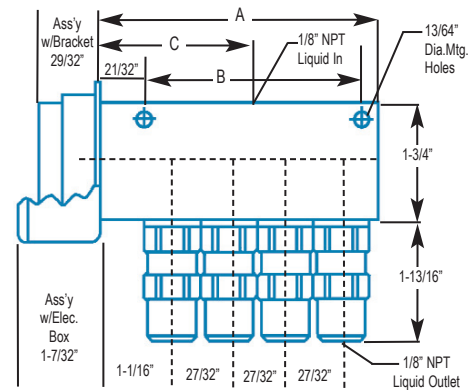


*In this lubrication application, using only a reservoir, a PurgeX<sup>®</sup> motor pump and a cycle timer. The liquid is being delivered for a horizontal chain drive.*

## SELECTION CHART

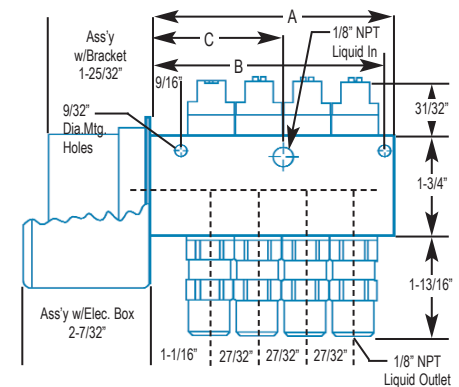
### Motor Driven

Catalog Number (AC)		Catalog Number (DC)		No. of Feeds	A	B	C
W/Bracket	W/Elec. Box	W/Bracket	W/Elec. Box				
B3429-1	B3429-11	B3473-1	B3473-11	1	1-5/8	25/32	1-1/16
B3429-2	B3429-12	B3473-2	B3473-12	2	2-15/32	1-9/16	1-1/2
B3429-3	B3429-13	B3473-3	B3473-13	3	3-5/16	2-3/8	1-15/16
B3429-4	B3429-14	B3473-4	B3473-14	4	4-5/32	3-3/16	2-5/16



### External Adjustment Motor

Catalog Number (AC External Adjustment)		Catalog Number (DC External Adjustment)		No. of Feeds	A	B	C
W/Bracket	W/Elec. Box	W/Bracket	W/Elec. Box				
B3474-1	B3474-11	B3475-1	B3475-11	1	2-19/32	1-7/8	1-1/2
B3474-2	B3474-12	B3475-2	B3475-12	2	2-19/32	1-7/8	1-1/2
B3474-3	B3474-13	B3475-3	B3475-13	3	3-15/32	2-3/4	2-11/32
B3474-4	B3474-14	B3475-4	B3475-14	4	4-9/32	3-9/16	2-11/32



© Viton is a registered trademark of Dupont Dow Corp.